



आपका विश्वास ही हमारी पहचान

COMPLETED PROJECTS



MIRAJ MALL, AJMER



MIRAJ AIRAVAT, UDAIPUR



MIRAJ MERIDIAN, NATHDWARA



MIRAJ MAJESTIC, BHILWARA



MIRAJ MALHAR, UDAIPUR

ON GOING PROJECTS

Corporate Office :

MIRAJ DEVELOPERS LTD.
REDEFINING REAL ESTATE

Miraj House, Panchwati, Udaipur - 313 001 (Raj.) INDIA | P: 0294 2528435/37 | F: 0294 2528436

mirajdevelopers@mirajgroup.in | www.mirajdevelopers.com

Site Add. : Miraj Morning, Sector-I4, Udaipur (Raj.) | Priority No.: 8875028264 | For Sales Enquiry 8875007653

Developed by Architect :  M/s Mishra & Garg Associate | Structural consultant "M/s Vijaytech Associates"

OTHER BUSINESSES- FMCG | PRINTING, STATIONERY & PACKAGING | PIPES & FITTINGS | FILM & CINEMAS | ENGINEERING

Disclaimer: Builders & Developers reserve the right to change any design and specification of the building without any prior notice and information. This Brochure is for illustration purpose only and it cannot be in any way treated as a legal document. Area are subject to change after structural & service layout.

It's Homes, Not Houses!



MIRAJ
Morning
REJUVENATE YOUR LIFE

2 BHK LUXURY APARTMENTS





Madan Paliwal
Chairman

The New Look of the Rising Sun - at Miraj Morning!

After the grand success of Miraj Mall, Miraj Arrawat, Miraj Malhar, Miraj Majestic and Miraj Meridian, and customer satisfaction leading to a persistent demand for more, we now present Miraj Morning - enter into a world where luxuriating is the way of living. An atypical assortment of uber architecture encrusted with the finest that money can purchase and fine elegance that money can't. Miraj Morning is as exclusive as it gets! A true manifestation of refreshing architecture, pleasant aesthetics and stunning designs makes Miraj Morning the best dwell for you. The serenity of Mother Nature and splendor of modern-day living become one here.



Growing by leaps and bounds

Over the last 25 years, Miraj has become a house hold name. The strength of the organization lies in the trust it has won of its customers. This trust has been earned through years of hard work and commitment in FMCG, Pipes & Fittings, Stationery, Entertainment and Real Estate.

Miraj is committed to creating beautiful structures for you along with stunning internal spaces. A testament to our commitment lies in our landmark projects - residential projects in Udaipur, Nathdwara & Bhilwara and the Miraj Mall in Ajmer which has become a favoured destination for Ajmerites.

For Miraj Developers Ltd, this is just the beginning and we are committed to building quality spaces in the years to come....



- Ideally located on National Highway 8
- Vastu friendly design with ample light and ventilation
- Earthquake resistant structures
- Security through Surveillance cameras for common areas
- Surrounded by the lush green beauty of the Aravali Hills
- Terrace garden with Lap Pool
- Multi-purpose hall which can be used to host parties
- Water softening plan to provide you pure soft water
- Provision for RO fitting in the kitchen
- Provision for AC (Copper piping only)
- Provision of wiring for Invertors
- 24 hours power back up in common areas
- Branded fittings & fixtures
- Two lifts in apartment
- Ample car parking facility



LIVING / DINING ROOM

| | |
|-----------------|---|
| Walls | Plaster with Plastic paint finish. |
| Floors | 2'-0" X 2'-0" vitrified tiles |
| Ceiling | Plaster with Plastic paint finish. |
| Doors | Decorative main door, other doors with wooden frame with laminated. Designers' shutters & S.S. fittings. |
| Windows/Glazing | Fully glazed aluminum powder coated / UPVC windows. |
| Electrical / AC | Sufficient light & plug points including A/C points with copper piping in Drawing room with ISI wires, modular switches, MCB. |

BEDROOM

| | |
|-----------------|--|
| Walls | Plaster with Plastic paint finish. |
| Floors | Laminate wooden flooring of Action Iesa / Johnson in master bedroom and 2'-0" X 2'-0" vitrified tiles in all other bedrooms. |
| Ceiling | Plaster with Plastic paint finish. |
| Doors | Wooden frame with laminated Designers' shutters & S.S. fittings. |
| Windows/Glazing | Fully glazed aluminum powder coated / UPVC windows. |
| Electrical / AC | Sufficient light & plug points including A/C points with copper piping in Bed rooms with ISI wires, modular switches. |

KITCHEN

| | |
|-----------------|--|
| Walls | Designer glazed tiles dado up to 2 ft . height. |
| Floors | 2'-0" X 2'-0" vitrified tiles |
| Ceiling | Plaster with Plastic paint finish. |
| Electrical / AC | Sufficient light & plug points with ISI wires, modular switches. |
| Platform | Granite platform with S.S. sink |
| Other | Semi modular kitchen with Provision for RO system. |

TOILETS

| | |
|-----------------|--|
| Walls | Ceramic tiles dado of RAK or equivalent upto lintel level |
| Floors | Ceramic tiles |
| Ceiling | Paint finish |
| Doors | Wooden frame with laminated Designers' shutters & S.S. fittings. |
| Windows/Glazing | Fully glazed aluminum powder coated / UPVC windows. |
| Electrical / AC | Sufficient light & plug points & geyser points in bathroom with ISI wires, modular switches, MCB. |
| Plumbing | Concealed plumbing center point fitting with adequate points. All Sanitary wares are of CERA or equivalent |
| Others | CP fittings of Jaquar or equivalent |

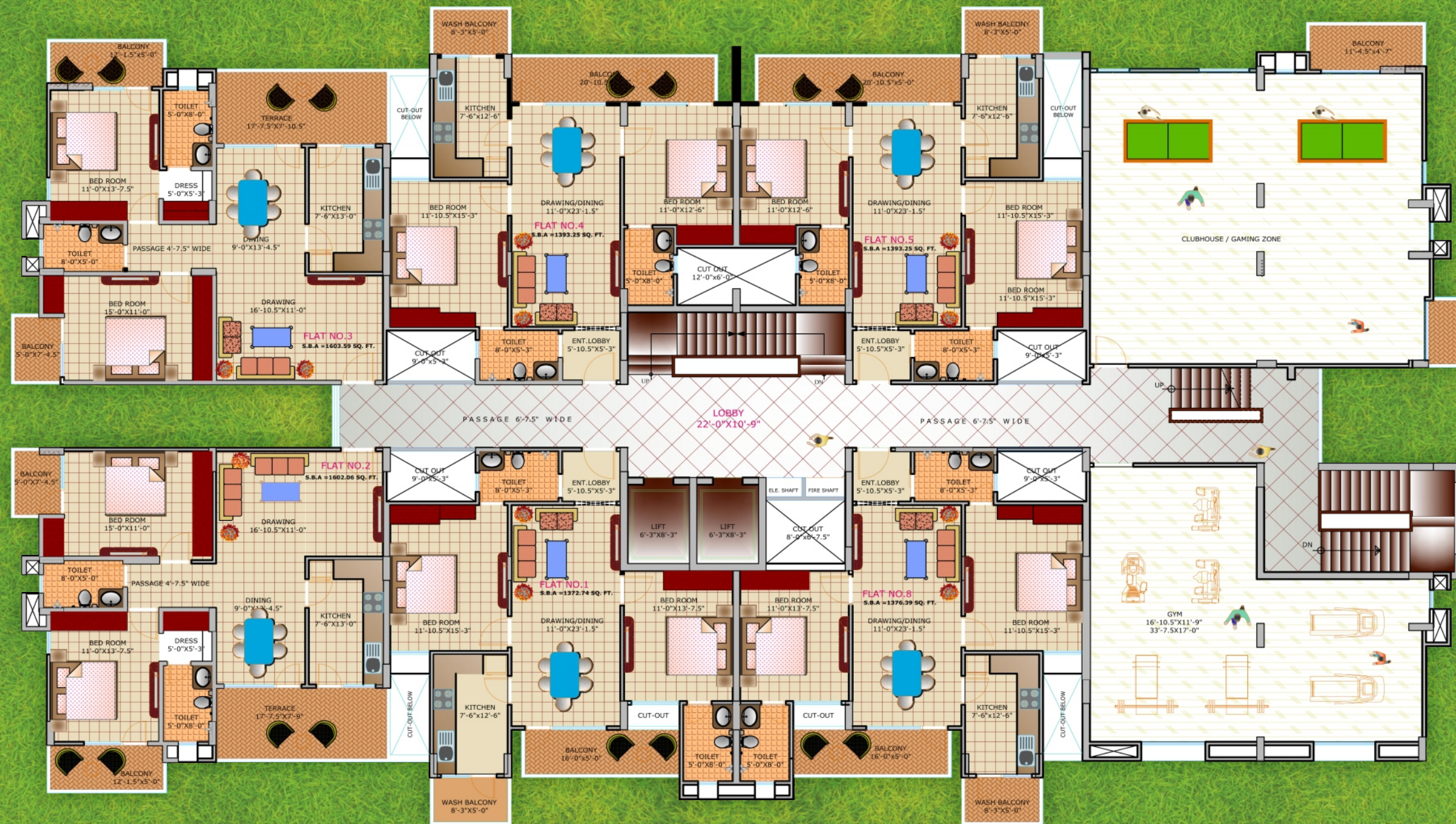
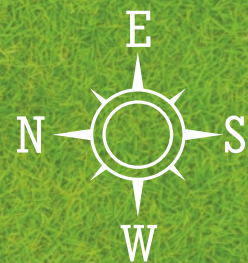
A New Morning in a Whole New World

Miraj Morning wherein, every comfort is available at one's disposal and at a stone's throw, be it shopping or sports, or even the kids' zone. The Miraj Morning is located closest on National Highway-08, having good schools, Hospitals and good connectivity for the bus-stand, railway station & airport within vicinity. The amenities provided at Miraj Morning are of world-beating standards. In the heart of western suburbs, the morning sun brings to you this beautiful iconic paradise. The breathtaking morning view from the apartments allows you to savor the true natural beauty at your leisure. Come to Miraj Morning and experience a living that completely surpasses all others. Only a true connoisseur can understand this fine true art of Indulgence; its refinements, its shades, and its grace. It is this comprehension of luxury that finely draws a bridge connecting comfort and sheer opulence.



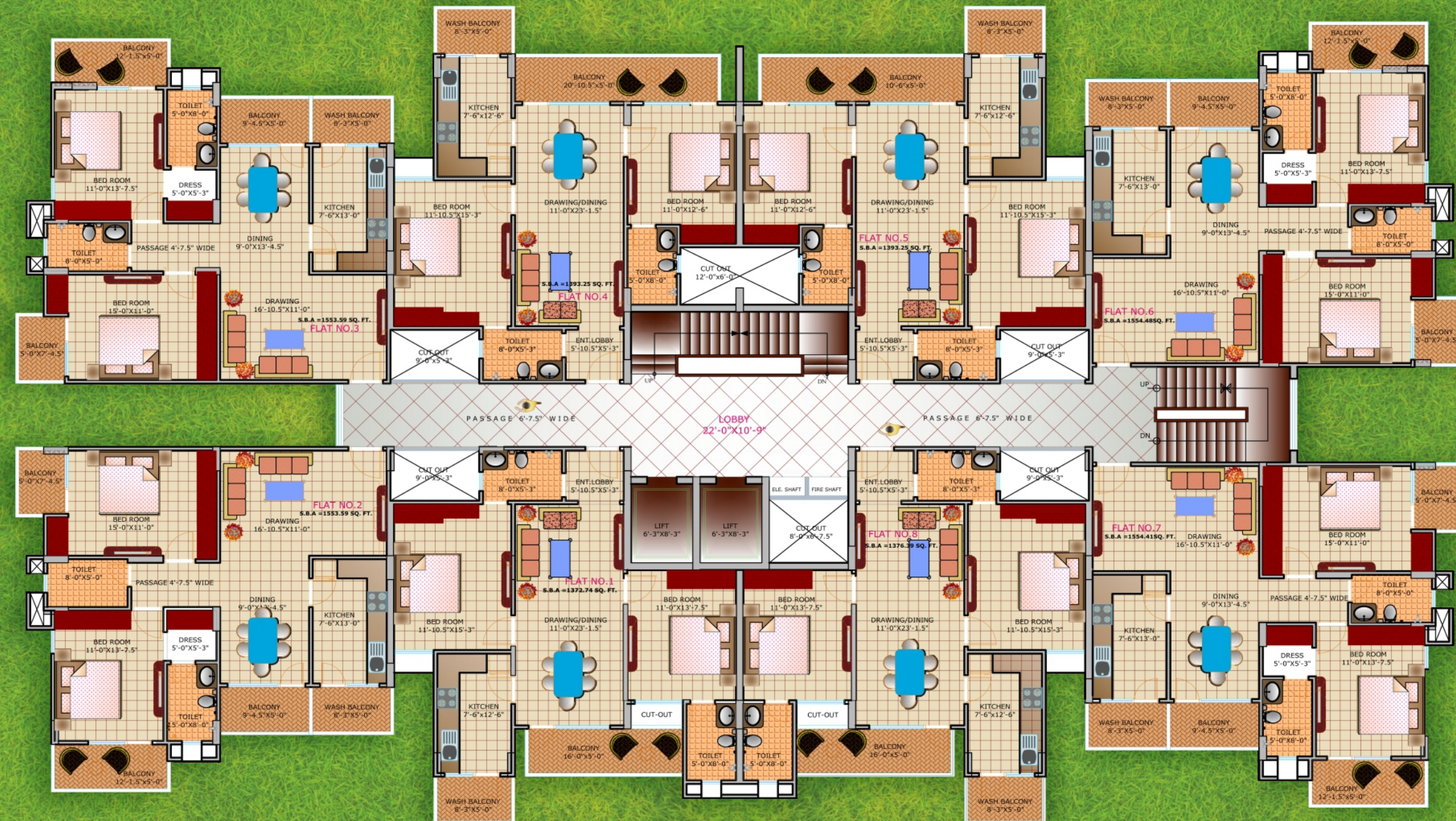
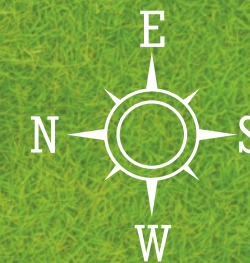
Typical Floor Plan

1st Floor



Typical Floor Plan

2nd to 8th Floor



2 BHK Unit Plan

FLAT No. 1 & 8



FLAT No. 1 & 8
super built up area 1375sq.ft.

- 1 DRAWING/DINING 11'-0" X 23'-1.5'
- 2 KITCHEN 7'-6" X 12'-6"
- 3 WASH BALCONY 8'-3" X 5'-0"
- 4 BEDROOM 11'-0" X 13'-7.5"
- 5 BATHROOM 5'-0" X 8'-0"
- 6 BALCONY 16'-0" X 5'-0"
- 7 BEDROOM 11'-10.5" X 15'-3"
- 8 BATHROOM 8'-0" X 5'-3"
- 9 ENTRANCE LOBBY 5'-10.5" X 5'-3"



FLOOR PLAN

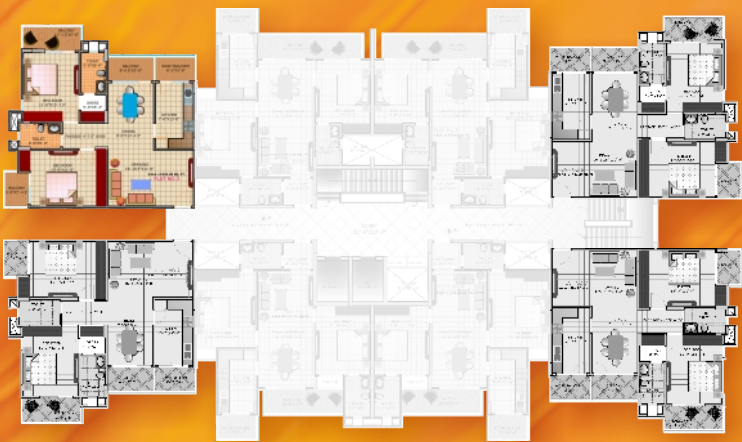
2 BHK Unit Plan

FLAT No. 2, 3, 6 & 7



FLAT No. 2, 3, 6 & 7
super built up area 1555sq.ft.

- 1 DRAWING 16'-10.5" X 11'-0"
- 2 DINING 9'-0" X 13'-4.5"
- 3 BALCONY 9'-4.5" X 5'-0"
- 4 KITCHEN 7'-6" X 13'-0"
- 5 WASH BALCONY 8'-3" X 5'-0"
- 6 PASSAGE 4'-7.5" WIDE
- 7 BEDROOM 11'-0" X 13'-7.5"
- 8 BATHROOM 5'-0" X 8'-0"
- 9 DRESS 5'-0" X 5'-3"
- 10 BALCONY 12'-1.5" X 5'-0"
- 11 BEDROOM 15'-0" X 11'-0"
- 12 BALCONY 5'-0" X 7'-4.5"
- 13 BATHROOM 8'-0" X 5'-0"



FLOOR PLAN

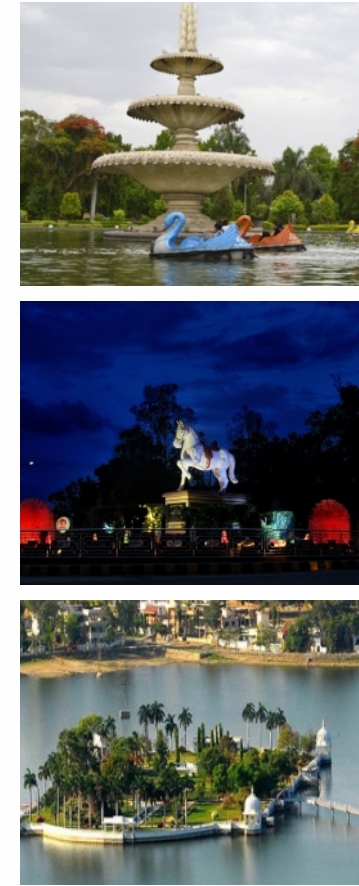


2 BHK Unit Plan

FLAT No. 4 & 5

Location Map

Indicative Map not a Scale



FLAT No.4 & 5
super built up area 1393sq.ft.

- 1 DRAWING/DINING 11'-0" X 23'-1.5"
- 2 KITCHEN 7'-6" X 12'-6"
- 3 WASH BALCONY 8'-3" X 5'-0"
- 4 BEDROOM 11'-0" X 12'-6"
- 5 BATHROOM 5'-0" X 8'-0"
- 6 BALCONY 20'-10.5" X 5'-0"
- 7 BEDROOM 11'-10.5" X 15'-3"
- 8 BATHROOM 8'-0" X 5'-3"
- 9 ENTRANCE LOBBY 5'-10.5" X 5'-3"



FLOOR PLAN

LOCATION ADVANTAGE

| Key Nodes | Drive Time (approx) |
|--------------------------|---------------------|
| Sukhadiya Circle | 10 minute |
| Airport | 20 minute |
| Shashtri Circle | 8 minute |
| Delhigate | 8 minute |
| Surajpole | 5 minute |
| Bus Station | 5 minute |
| Railway Stationer | 5 minute |
| Goverdhan Sagar Lake | 2 minute |
| Rajasthan Hospital | 1 minute |
| Shreenath ji Temple, NTD | 45 minute |
| Shopping mall | 1 minute |

*All distances mentioned above are crow fly distances

